

During your test the examiner will ask you two questions – one ‘tell me’ at the start of your test and one ‘show me’ whilst you’re driving.

‘Tell me’ questions

1. Tell me how you’d check that the brakes are working before starting a journey.

Brakes should not feel spongy or slack. Brakes should be tested as you set off. Vehicle should not pull to one side.

2. Tell me where you’d find the information for the recommended tyre pressures for this car and how tyre pressures should be checked.

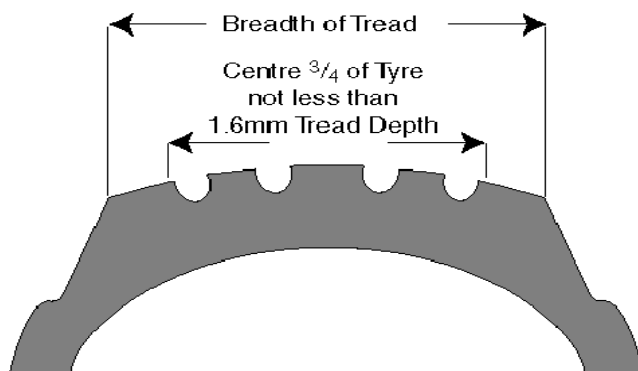
Manufacturer’s guide or the label on the driver’s door pillar. Use a reliable pressure gauge, check and adjust pressures when tyres are cold, don’t forget the spare tyre, remember to refit the valve caps.

3. Tell me how you make sure your head restraint is correctly adjusted so it provides the best protection in the event of a crash.

The head restraint should be adjusted so the rigid part of the head restraint is at least as high as the eye or top of the ears, and as close to the back of the head as is comfortable.

4. Tell me how you’d check the tyres to ensure that they have sufficient tread depth and that their general condition is safe to use on the road.

No cuts and bulges, 1.6mm of tread depth across the central three-quarters of the breadth of the tyre, and around the entire outer circumference.



5. Tell me how you'd check that the headlights and tail lights are working. You don't need to exit the vehicle.

Explain how you'd operate the switch, then walk round vehicle (as this is a 'tell me' question, you don't need to physically check the lights).

6. Tell me how you'd know if there was a problem with your anti-lock braking system.

A warning light should illuminate if there is a fault with the anti-lock braking system.

7. Tell me how you'd check the direction indicators are working. You don't need to exit the vehicle.

Explain how you'd operate the hazard lights switch, and then walk round vehicle (as this is a 'tell me' question, you don't need to physically check the lights).

8. Tell me how you'd check the brake lights are working on this car.

Explain how you'd turn the ignition on and operate the brake pedal, make use of reflections in windows or doors, or ask someone to help.

9. Tell me how you'd check the power-assisted steering is working before starting a journey.

If the steering becomes heavy, the system may not be working properly. Before starting a journey, 2 simple checks can be made.

Gentle pressure on the steering wheel, maintained while the engine is started, should result in a slight but noticeable movement as the system begins to operate. Alternatively turning the steering wheel just after moving off will give an immediate indication that the power assistance is functioning.

10. Tell me how you'd switch on the rear fog light and explain when you'd use it. You don't need to exit the vehicle.

Explain how you'd operate the switch by turning on dipped headlights and then turning the fog light on. Check amber warning light is on. Explain use (when visibility is less than 100 metres).

11. Tell me how you switch your headlight from dipped to main beam and explain how you'd know the main beam is on.

Explain how you'd operate the switch and check the blue main beam warning light.



12. Tell me how you'd check that the engine has sufficient oil.

Explain how you'd identify dipstick, describe how to check of oil level against the minimum and maximum markers.

13. Tell me how you'd check that the engine has sufficient engine coolant.

Explain how you'd identify high and low-level markings on header tank and describe how to top up to correct level.

14. Tell me how you'd check that you have a safe level of hydraulic brake fluid.

Explain how you'd identify the reservoir, and check level against high and low markings.

'Show me' questions

The 'show me' question (where you show how you'd carry out a safety task) will be asked while you're driving. The examiner will say – 'when it's safe to do so, can you show me

1. How you wash and clean the rear windscreen?

Turn the end of the right hand stalk one click towards you.

2. How you wash and clean the front windscreen?

Pull the right hand stalk towards you

3. How you'd switch on your dipped headlights?

Turn the end of the left hand stalk away from you as far as it will go

4. How you'd set the rear demister?

Press the rear window demister switch

5. How you'd operate the horn?

Press anywhere in the central area of the steering wheel

6. How you'd demist the front windscreen?

Press the front screen demister switch

7. How you'd open and close the side window?

Press down and then pull up one of the window switches on the door controls.